

EXECUTIVE SUMMARY

January 2023

Table of Contents

PROGRAM IMPLEMENTATION

- Executive Briefing
- Project Photos

OVERALL PROJECT INFORMATION

- Master Schedule – ECM Matrix
- Financial Status
- Local / Minority / Women Business Enterprises Program Implementation

Hempstead Energy Performance Contract Executive Briefing

Listed are a few of the key items that have taken place in the month of January 2023:

Hempstead High School:

- Chillers at 95% - Air separator install conversation held with ELITE, ESG & Boilermatic and BBS. ESG to schedule Boilermatic to site to address non conformance issued based on direction by the engineer via Skype 1/27/23;
- Building Envelope/Weatherization - 100% complete
- Domestic Hot Water Heaters installed to location replace (1) existing and out to exterior of building; Units were replaced Dec 27th -29th. Commissioning completed. Start up procedures completed and documentation provided. Architect review of commissioning and functionality completed. Training for HUFSD staff completed on 1/26/23.

ABGS Middle School:

- Interior lighting at approximately 96% complete.
- Exterior lighting at approximately 67% complete.
- Boiler demoed at Middle School week of 12/9/22. Discussions being held to possibly demo second boiler at middle school that is not in use. Proposal to be supplied by ESG for review for this work.
- Building Envelope/Weatherization approximately 95% complete.

Hempstead Energy Performance Contract Executive Briefing

ABGS Middle School:

- Interior lighting at approximately 96% complete.
- Exterior lighting at approximately 67% complete.
- Boiler demoed at Middle School week of 12/9/22. Discussions being held to possibly demo second boiler at middle school that is not in use. Proposal to be supplied by ESG for review for this work.
- Building Envelope/Weatherization approximately 95% complete.

Barack Obama Elementary School:

- Interior and exterior lighting complete.
- Building Envelope/Weatherization complete

David Paterson Elementary School:

- Building Envelope/Weatherization complete

McNeil-Franklin Elementary School:

- Interior and exterior lighting nearly complete at 99%. Awaiting material for two (2) corridor lights to be installed;
- Building Envelope/Weatherization complete

Jackson Annex Elementary School:

- Exterior lighting nearly complete at 99%.

Hempstead Energy Performance Contract Executive Briefing

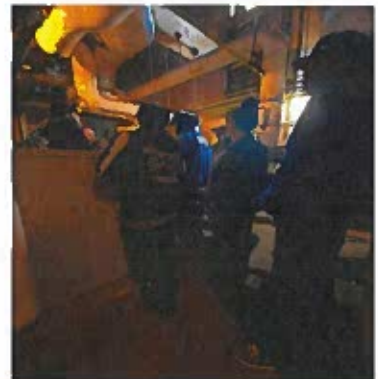
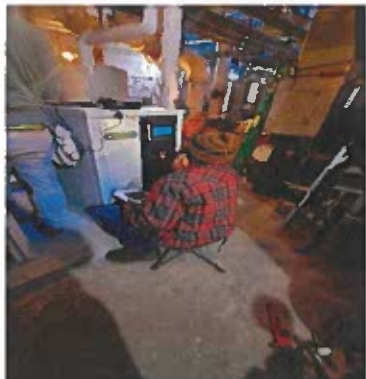
Jackson Main Elementary School:

- Interior lighting at approximately 89% complete.
- Exterior lighting at 74% complete.

Marshall Elementary School:

- Interior lighting at approximately 89% complete.
- Exterior lighting at 81% complete.
- Building Envelope/Weatherization complete

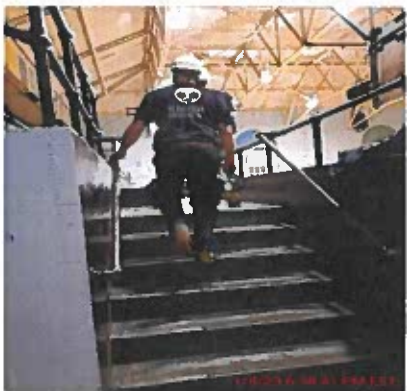
Installation of DHWH at Hempstead High School



Interior and Exterior Lighting Replacements



Weatherization Improvements at Various Locations



OVERALL PROJECT INFORMATION

Master Schedule – ECM Matrix & Financial Status

Energy Conservation Measures (ECMs) Percentage Completion	ABGS Middle School	Barack Obama Elementary School	David Patterson Elementary School	Franklin Elementary School	Hempstead High School	Jackson Annex Elementary School	Jackson Main Elementary School	Marshall Elementary School
ECM #01 - Replace Interior Lighting	95%	99%	n/a	99%	20%	n/a	89%	89%
ECM #02 - Replace Exterior Lighting	67%	99%	20%	99%	20%	99%	74%	80%
ECM #03 - Install VFD on Chilled Water Pumps	n/a	n/a	n/a	n/a	100%	n/a	n/a	n/a
ECM #04 - Install VFD on Hot Water Pumps	n/a	20%	n/a	n/a	n/a	n/a	n/a	n/a
ECM #06 - Replace Chillers	n/a	n/a	n/a	n/a	95%	n/a	n/a	n/a
ECM #07 - Boiler Controls	n/a	n/a	n/a	n/a	n/a	20%	20%	20%
ECM #08 - Boiler Isolation Valve	n/a	n/a	n/a	n/a	20%	n/a	n/a	n/a
ECM #09 - Replace Boiler with High Efficiency Replacement	n/a	20%	n/a	20%	n/a	n/a	n/a	n/a
ECM #09 - Replace Steam Boiler with New Steam Boiler	26%	n/a	n/a	n/a	n/a	n/a	n/a	n/a
ECM #11 - HVAC Control Upgrades	20%	n/a	n/a	n/a	20%	n/a	n/a	n/a
ECM #12 - Building Envelope Upgrades	95%	100%	100%	100%	100%	n/a	n/a	100%
ECM #13 - Replace Steam Traps	100%	n/a	n/a	n/a	n/a	n/a	n/a	n/a
ECM #14 - Install Solar PV	20%	n/a	n/a	n/a	20%	n/a	n/a	n/a
ECM #15 - Install Plug Load Controls	20%	n/a	n/a	n/a	20%	n/a	n/a	n/a
ECM #16 - Replace DHW Heater	n/a	n/a	n/a	n/a	100%	n/a	n/a	n/a
ECM #17 - Piping Insulation	20%	20%	20%	20%	20%	20%	20%	20%
ECM #18 - Install Pool Cover	n/a	n/a	n/a	n/a	20%	n/a	n/a	n/a
ECM #19 - Water Conservation - Thermal Savings	20%	20%	20%	20%	20%	20%	20%	20%

OVERALL PROJECT INFORMATION

Master Schedule – ECM Matrix & Financial Status

Major Areas of Work Planned Completion:

- | | |
|--|--------------------------|
| ▪ Replace Domestic Hot Water Heater | 4 th Qtr 2022 |
| ▪ Boiler Controls | 1 st Qtr 2023 |
| ▪ Building Envelope Upgrades | 1 st Qtr 2023 |
| ▪ Interior and Exterior Lighting Replacement | 2 nd Qtr 2023 |
| ▪ Boiler Replacement | 3 rd Qtr 2023 |
| ▪ Installation of Solar PV Systems | 1 st Qtr 2024 |

This is a summary of the financial status with expenses up to December 30, 2022.

- | | |
|---|------------------|
| ▪ Total Program Amount: | \$ 10,751,012.00 |
| ▪ Payments to Date: | \$ 5,404,217.40 |
| ▪ Pending Payments: <small>Figures subject to be adjusted. Pencil in Review</small> | \$ 374,483.74 |
| ▪ Remaining Balance | \$ 5,346,794.60 |

Local/ Minority/ Women Business Enterprise Program Implementation

Energy Systems Group's (ESG) Program Implementation:

ESG has been working with their subcontractors and Elite Construction of NY to examine areas for LMW business and workforce participation. The following information contains the proposed planned participation that has been discussed with the current vendors participating on the EPSC:

- **Cardinal Controls:** offer to connect a young community member (or members) with IBEW Local 25 and/or Plumbers Local 200. This is an opportunity to begin not just a job, but a true career in the electrical or plumbing industries.
- **Boilermatic:** retained the services of Unitech Services Group, a Minority Business Enterprise, to accomplish demolition work of mechanical equipment.
- **Boilermatic:** planned to purchase all equipment and materials utilizing the services of Y&C Specialty Products, a Minority Business Enterprise.
- **Northeast Envelope:** Resume provided to employ local worker to be involved in scope of contract.
- **Elite Construction Company of NY:** ESG has retained the services of a Local, Veteran and Minority Business Enterprise to provide construction management services.
- **Sunrise Power Solutions:** a certified Woman Business Enterprise, who's company leadership attended Hempstead Schools, has a minority Project Manager and a lead female African American foreman leading field operations.
- **BeRetrofit:** a certified Woman Business Enterprise; Resume provided to employ local worker to be involved in scope of contract.

Additional efforts for LMWBE Involvement:

- Elite Construction provided local MWBE pipe insulation company to ESG for possible work on the project.

Local/ Minority/ Women Business Enterprise Program Implementation

Additional efforts for LMWBE Involvement (continued):

- Qualifications for employment provided to Elite by Weatherization company.
- Elite reached out to multiple job placement agencies (ABBA, Social services, Hempstead Works...) and provided qualifications requesting resumes.
- A resume was provided back from social services, with qualifications that were required being met. ESG interviewed candidate and employment under review.
*UPDATE *Candidate was not selected.
- ESG was advised to provide all sub contractor requirements/qualifications as so ELITE could repeat the process to help with the overall effort of satisfying the MWBE effort and try to get local individuals hired and involved. More documentation providing prevailing wage labor rates is being supplied to job search company as requested.
- Elite has provided name of Jetex Mechanical, a Veteran and Minority Business Enterprise, for possible involvement with mechanical scope of work.

If the district knows of community members that might be interested in participation of the workforce initiatives, please submit their information to Elite Construction Company of NY to be provided to Energy Systems Group for consideration.

Local/ Minority/ Women Business Enterprise Program Implementation

- The below matrix denotes the percentages of the total contract value that are allocated towards the contracts for the MBE/WBE which include some of the consultants, the general contractor as well as a few of the sub-contractors. The total allocation currently is at 45%. Continued efforts are ongoing to include local minority individuals and local minority companies in the project.

ECM	ECM Value	% Subcontracted to a Minority Contractor	MBE Value	WBE Value	Total M/WBE
ELITE Construction of New York	\$250,000	100%	\$250,000	\$0	MBE
BBS Architects	\$530,974	0%	\$0	\$0	
ESG PM/GC	\$537,551	15%	\$80,633	\$0	MBE*
ESG Engineering	\$537,551	30%	\$161,265	\$0	MBE*
Lighting	\$1,388,509	50%	\$0	\$694,255	WBE
Pump VFDs	\$6,874	25%	\$1,719	\$0	MBE
Chiller Replacement	\$1,800,769	0%	\$0	\$0	
Boiler Controls	\$29,997	0%	\$0	\$0	
Boiler Isolation Vales	\$31,247	0%	\$0	\$0	
Pool thermo Cover	\$8,394	0%	\$0	\$0	
Boiler Replacement	\$2,479,331	50%	\$1,239,665	\$0	MBE
HVAC Controls	\$183,313	0%	\$0	\$0	
Building Envelope	\$239,735	0%	\$0	\$0	
Steam Trap Replacement	\$75,297	0%	\$0	\$0	
PV Solar	\$2,403,104	100%	\$0	\$2,403,104	WBE
Plug Load Controls	\$10,565	0%	\$0	\$0	
Replave DHWs	\$31,247	25%	\$7,812	\$0	MBE
Pipe insulation	\$189,850	0%	\$0	\$0	
Water Conservation	\$16,706	0%	\$0	\$0	
Total	\$10,751,013	45%	\$1,741,094	\$3,097,359	\$4,838,452

MBE* - denotes a % of our project specific employee force